

# Selfhosting wiki

My Self-hosting wiki to track any interesting things or any issues i come across to recall

- [Moving Personal Site to home](#)
  - [Setting up a good deployment workflow](#)
- [Bricking my EAP 610 indoor AP](#)
- [Best way to setup a production VPS](#)

# Moving Personal Site to home

This is the process of moving my personal site to home

Moving Personal Site to home

# Setting up a good deployment workflow

I wanna setup a good deployment workflow for my personal site and also any website i wanna host. Coolify seems like a good option but there is another options out there to host my application.

# Bricking my EAP 610 indoor AP

I was trying to upgrade firmware through omada controller and then i accidentally forgot I was doing that and disconnected the switch POE power to the AP... Resulting in AP being bricked. The AP stopped working and also I wasn't able to reset the AP with the standard reset procedure probably due to it not being able to boot.

After trying few times and lot of googling found a guide that will help me go to recovery mode of the AP and flash a firmware version manually. I tried to TFTP method but had no luck. So i went with the webpage approach

The guide below is from <https://www.tp-link.com/us/support/faq/3186/> .

## I. Scenario

Sometimes, your EAP might become bricked during firmware upgrade mostly due to unpredictable power failure. Through firmware recovery you will make your bricked device enter Recovery Mode to recover its firmware and work as normal.

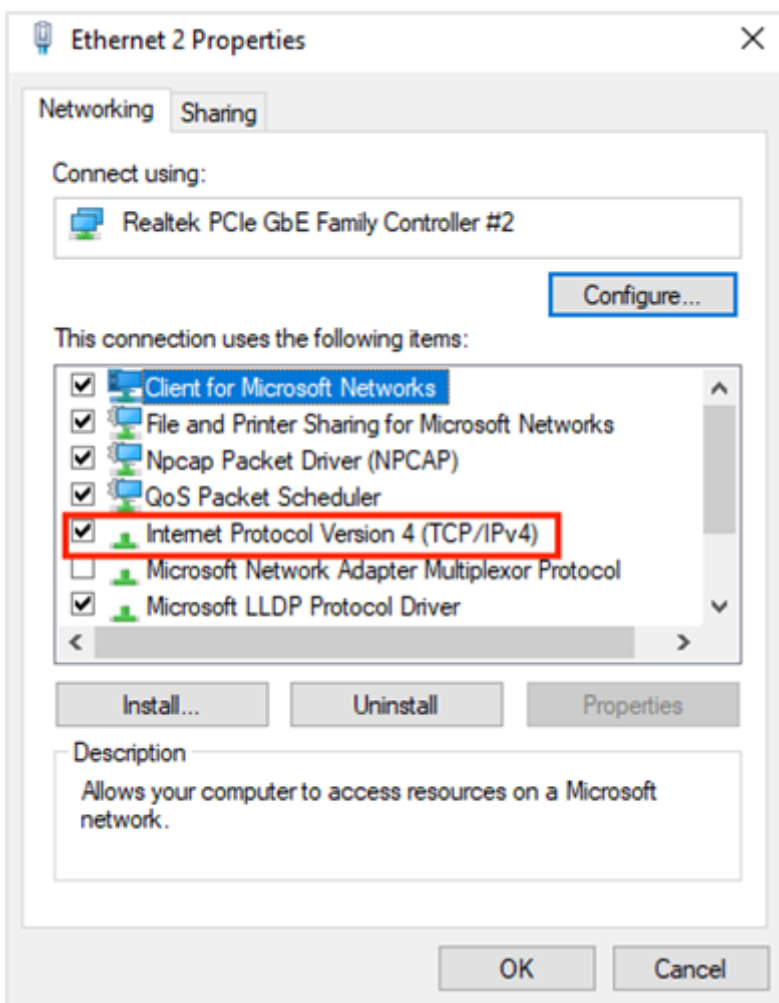
Note: Not all EAP models support firmware recovery, only models listed below do.

**EAP225v5, EAP245v3/v4, EAP265HDv1, all 802.11AX EAP. All models support webpage method, EAP245v3 and EAP265HDv1 support TFTP as well.**

# II. Configuration Steps

## Set Static IP address for the PC

1. Open your PC, go to Control Panel->Network and Internet->Network and Sharing Center->Change adapter settings->find your Ethernet Adapter and right-click it to go to Properties.

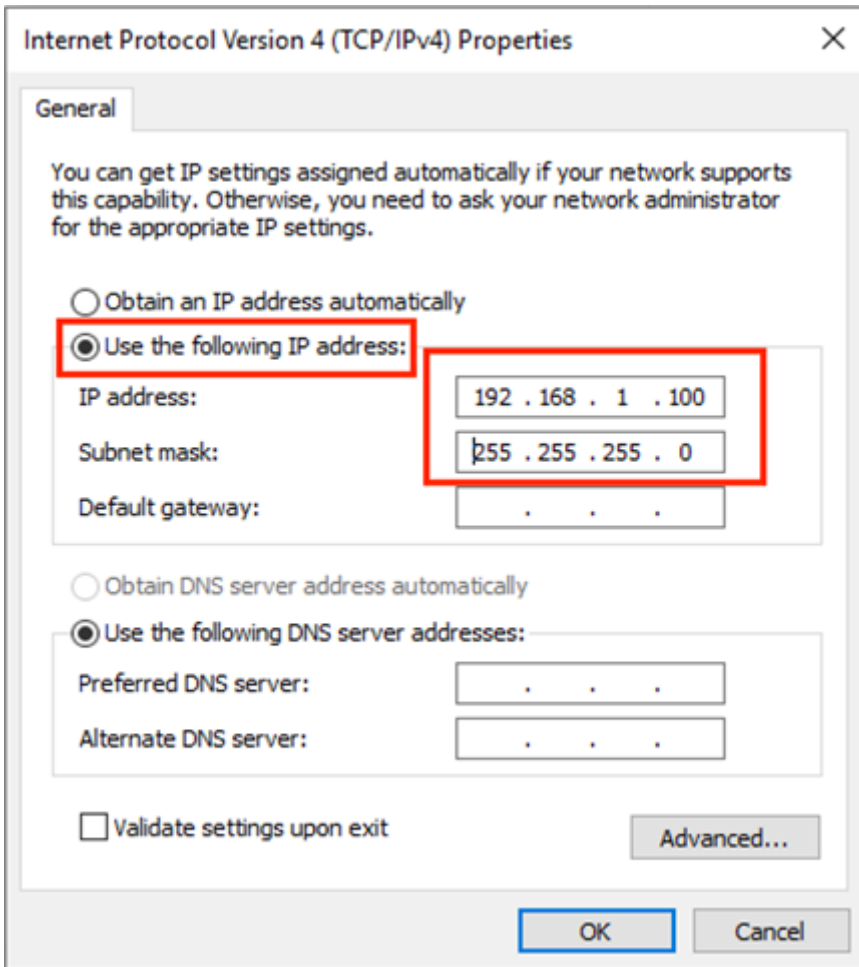


2. Double-click Internet Protocol Version4(TCP/IPv4) in item list->choose Use the Following IP address and set as rules below.

Note:

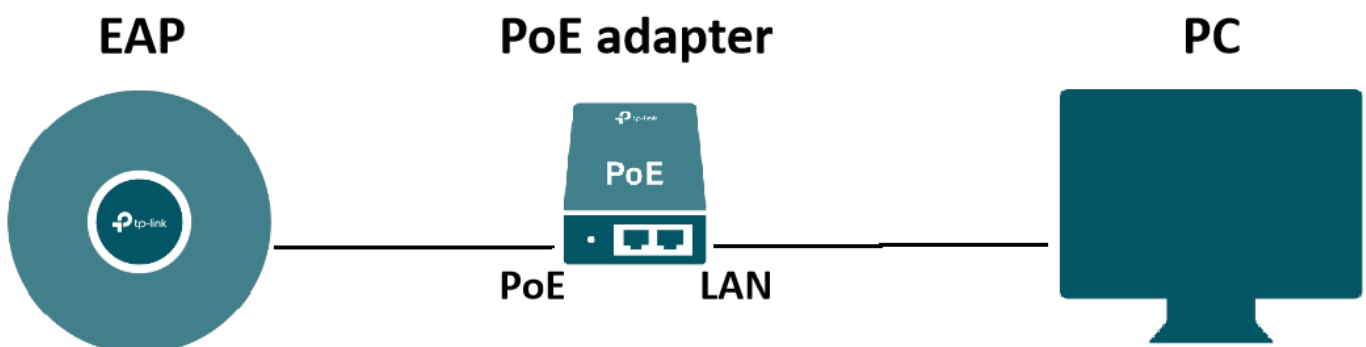
- If you are using EAP245v3/EAP265HDv1, set the IP address/Subnet mask as **192.168.1.100/ 255.255.255.0**;

- If you are using other EAPs, set the IP address/Subnet mask as **192.168.0.100/255.255.255.0**.



# Firmware Recovery

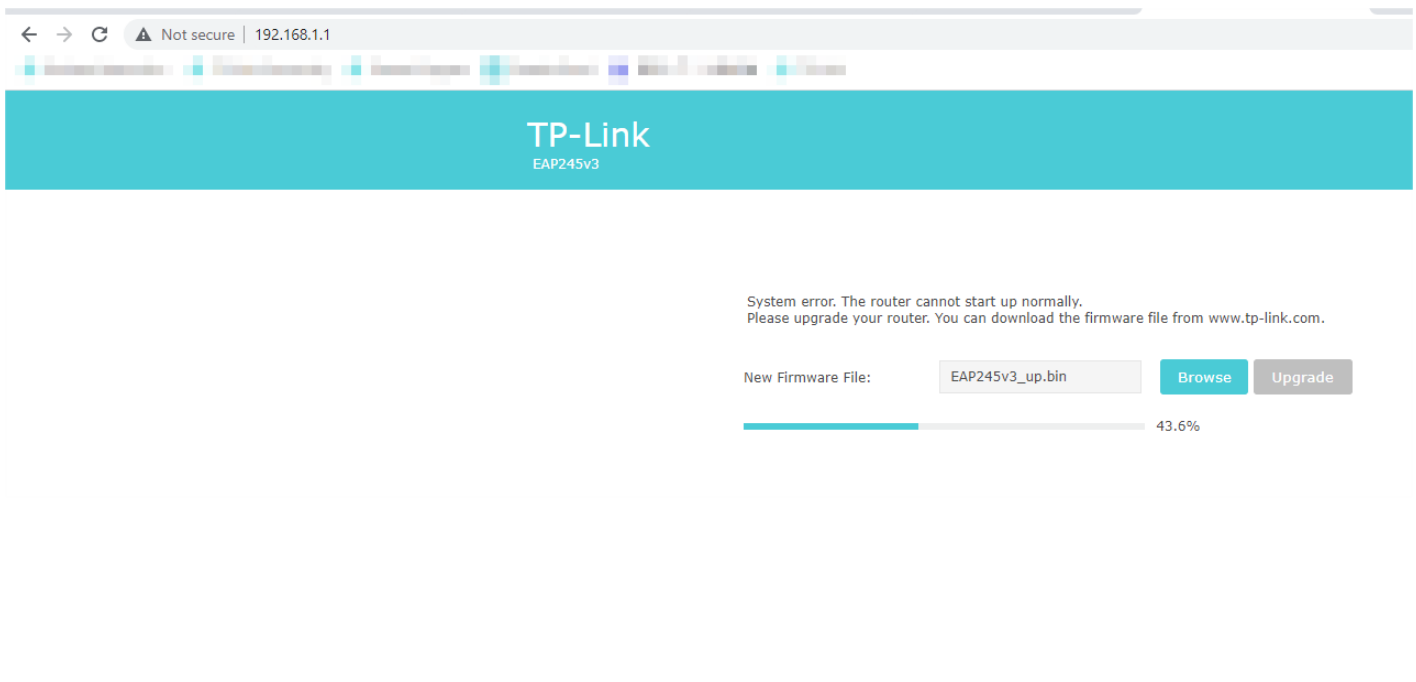
## #1 Through Webpage



1. Download the firmware of EAP from the official website of TP-Link and unzip the compressed file.  
(<https://www.tp-link.com/en/support/download/eap245/v3/#Firmware>)
2. Prepare the PoE adapter for EAP.
3. Connect your PC to the LAN port of the PoE adapter.
4. Keep holding the reset button of EAP.
5. Connect the EAP to the POE port of the PoE adapter.
6. Wait until LED on to release the reset button.
7. Open a browser->input **192.168.1.1** (If you are using models out of EAP245v3/265HDV1, input **192.168.0.254** here) in the address bar and enter it.

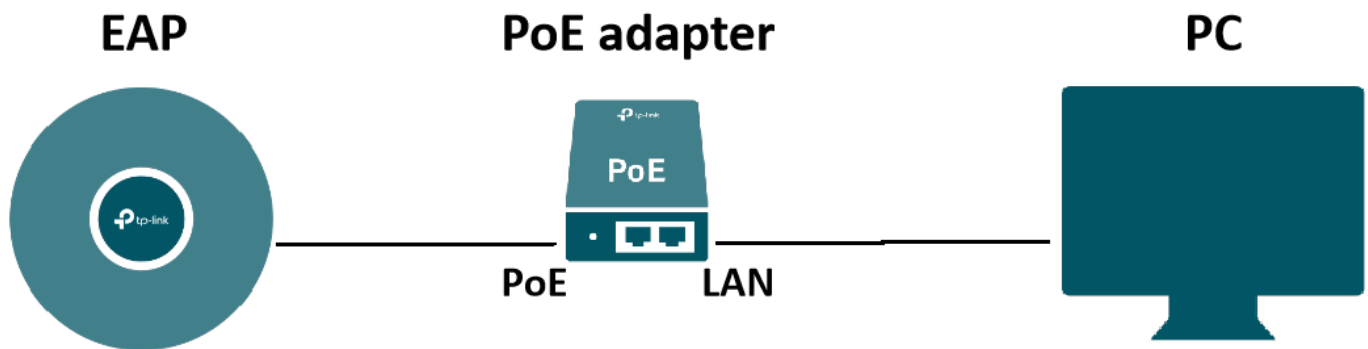
**Note: please make sure you are reaching to EAP through http, otherwise you'll get refused to connect.**

8. Choose the firmware you downloaded before.
9. Press Upgrade.



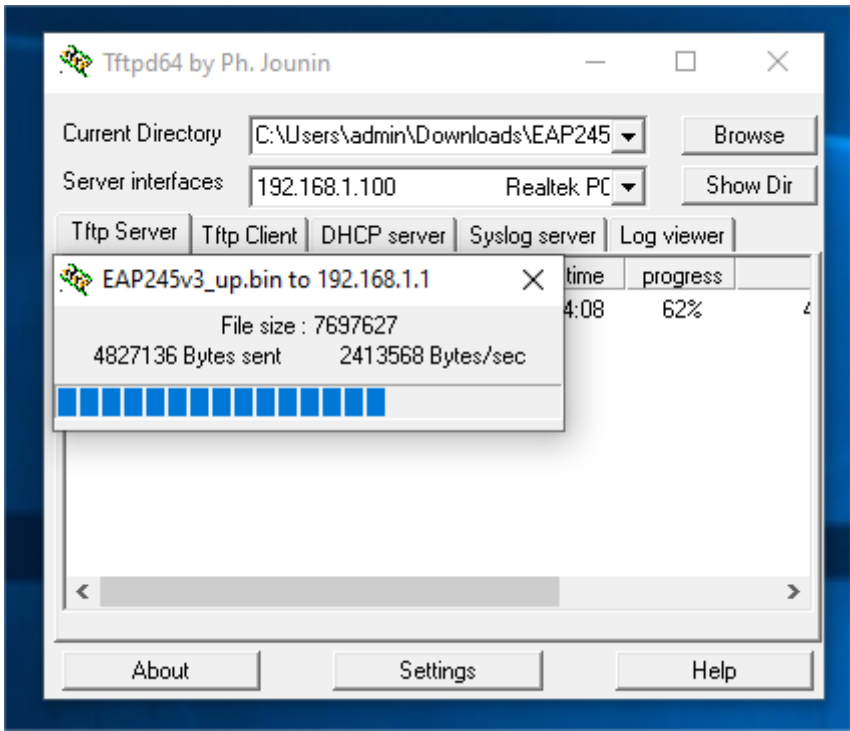
## #2 Through TFTP

# For EAP245v3/EAP265HDv1, there's another way you could choose to recover firmware.



1. Download the firmware of EAP from the official website of TP-Link and unzip the compressed file. (<https://www.tp-link.com/en/support/download/eap245/v3/#Firmware>)
2. Modify your firmware file name as "**EAP245v3\_up. bin**"
3. TFTP file transformation is used in this method, PC as TFTP server and EAP as TFTP client. You could download the tftpd64 from <https://github.com/peacepenguin/tftpd64/releases> and install it.
4. Connect your PC to the LAN port of the adapter.
5. Open tftpd64->change the Current Directory to where you place the firmware->choose 192.168.1.100 as Server interface.
6. Hold the reset button of EAP->then plug the EAP to the POE port of the adapter.
7. Keep holding (less than 30s) the reset button of EAP until the file transfer window pops out.  
Note: If you have trouble with this step, please try more times. Please pay attention to the server interfaces of Tftpd64, it sometimes will change back to loopback interface.
8. Release the reset button and wait until file transfer finishes.





# Best way to setup a production VPS

## Intro

After watching the new dream of code video about [Setting up a production ready VPS is a lot easier than I thought.](#) I wanted to try to replicate this for one of the server of my own. Maybe try to do it on one of the servers on my homelab. But for first experiment I think its best to try it out on a hetzner VPS. And before trying to host one of my own application I will be hosting the application he made called <https://github.com/dreamsofcode-io/guestbook>

## Tech to work with

- Docker Install - [Docker install](#)
- Traefik - [Traefik Installation](#)
- Watch Tower to allow auto deploy with docker image updates - [Watch tower](#)